



# Current Status

- A 'Lobby Team' of 6 people developed a set of specifications for the area.
- Hired a professional designer, GCI Design, to come up with a plan based on these requirements.
- We had the project quoted to set a budget number – at this point we have not obtained additional, competitive quotes.
- We still have many details like colors, furniture, traffic flow and coffee/food serving counter to work out, but we have set a budget for these items.

# Next Steps

- Obtain multiple quotes, work with contractors to get ideas to 'value engineer' the design – to figure out how to achieve the same look and results for less.
- Have GCI design complete the materials and finishes details of the design.

# Design Considerations

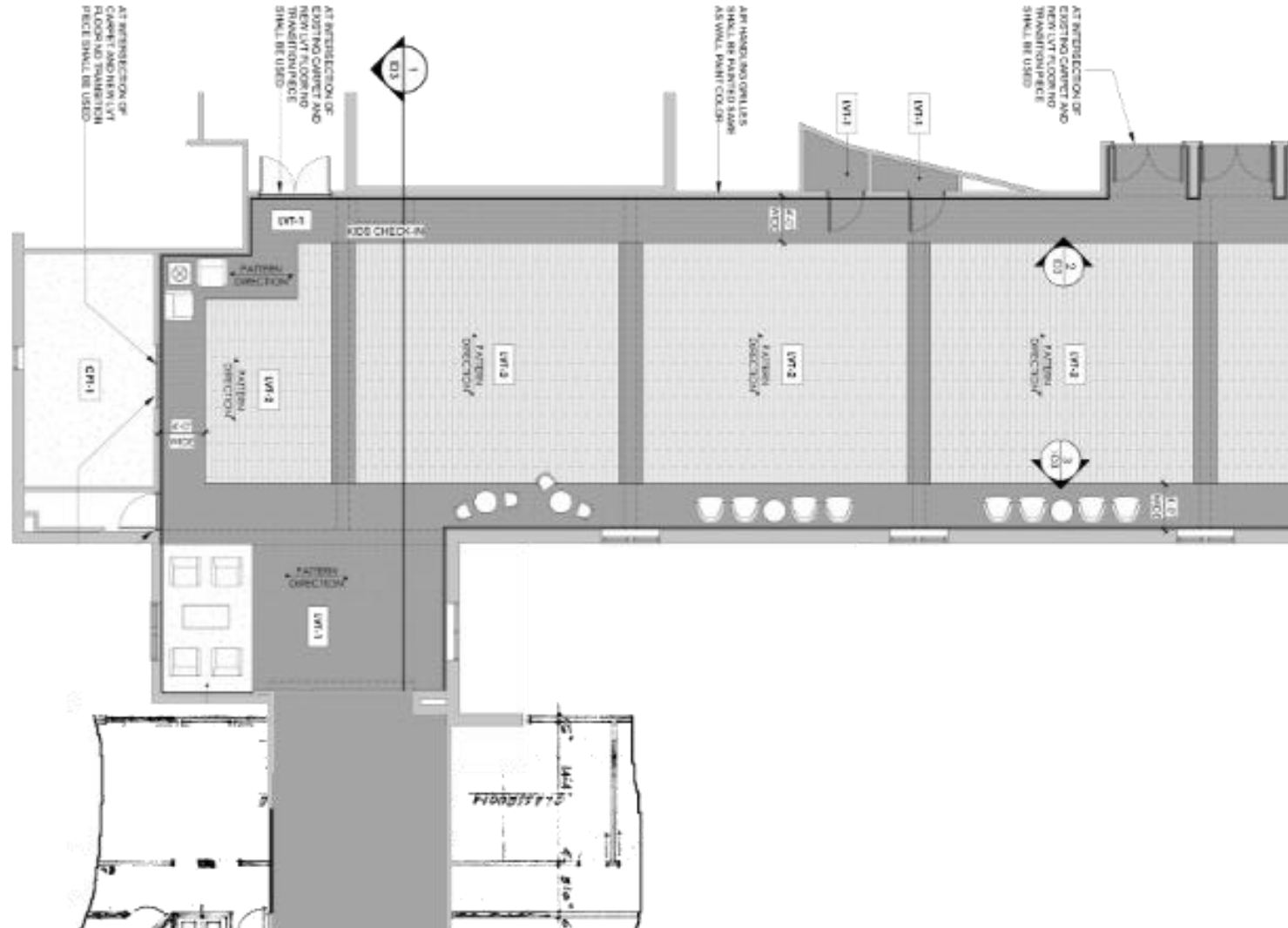
- Design must be timeless and durable – it is expected to last for the next 15-20 years.
- Food and high traffic make it difficult to keep carpet clean.
- We need a more permanent serving solution for coffee/food.
- Comfortable seating and tables make the area much more useful.
- Sound is a concern, especially from the back of the sanctuary during the end of the 1<sup>st</sup> service.

# Plan Summary:

- Flooring
- Ceiling
- Lighting
- Paint
- Furniture
- Navigational Signage
- Window Treatments
- Coffee/snack station
- Sanctuary door sound proofing
- Digital Sign
- Floor Scrubber

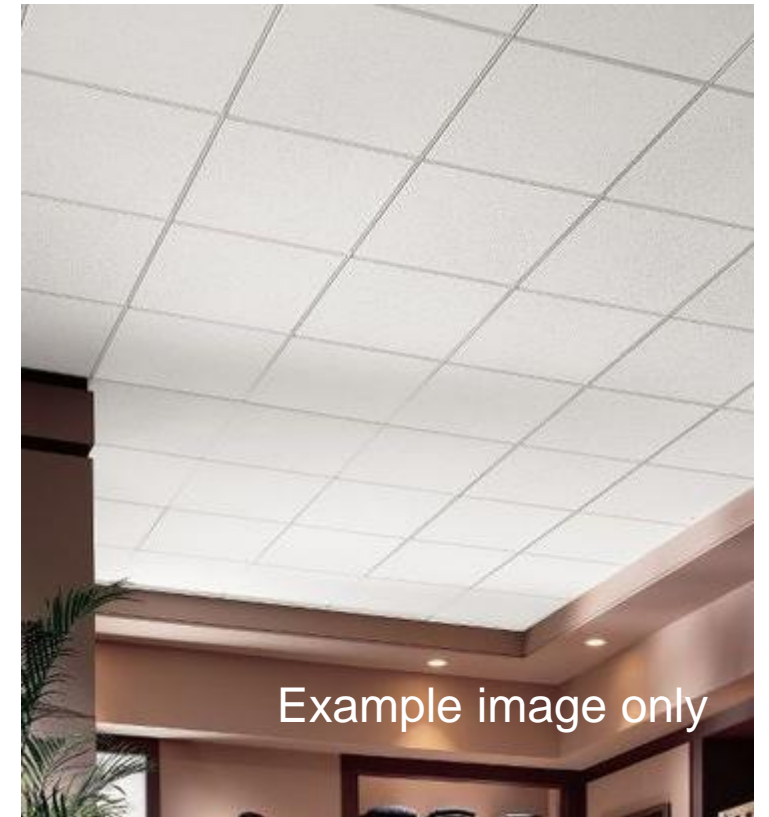
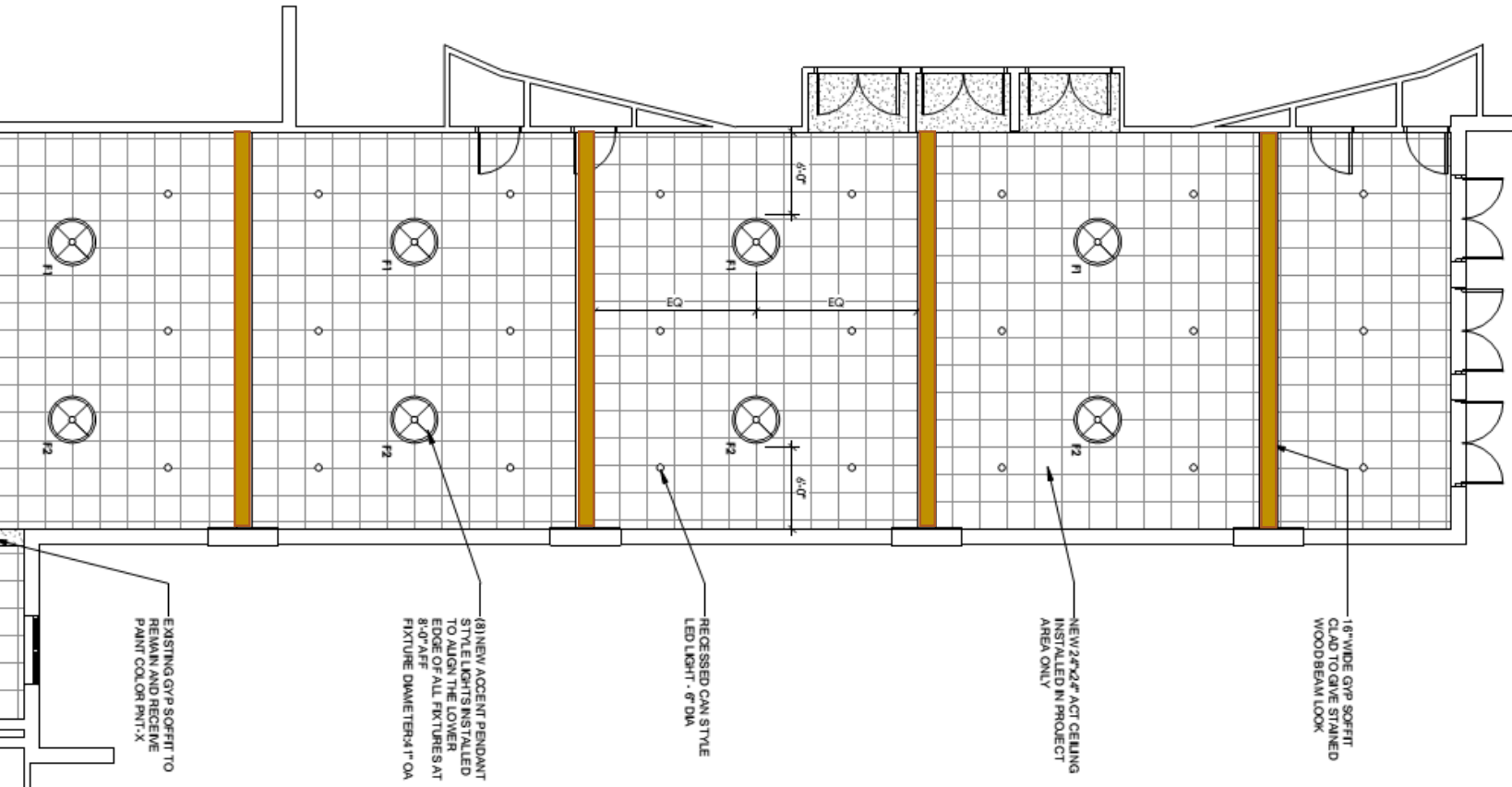
# Flooring:

- New wood look vinyl plank flooring
- Product has sound-absorbing properties



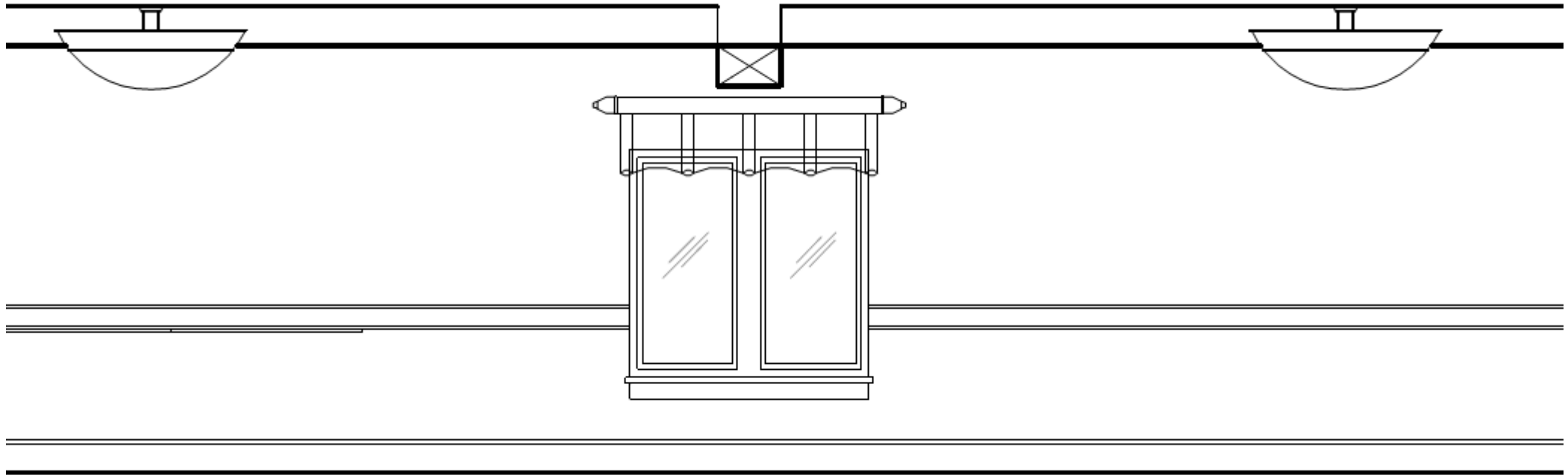
# Ceiling and beams:

- Beveled edge 2'x2' acoustical ceiling
- (5) 12" tall x 16" wide wood-look beams



# Lighting:

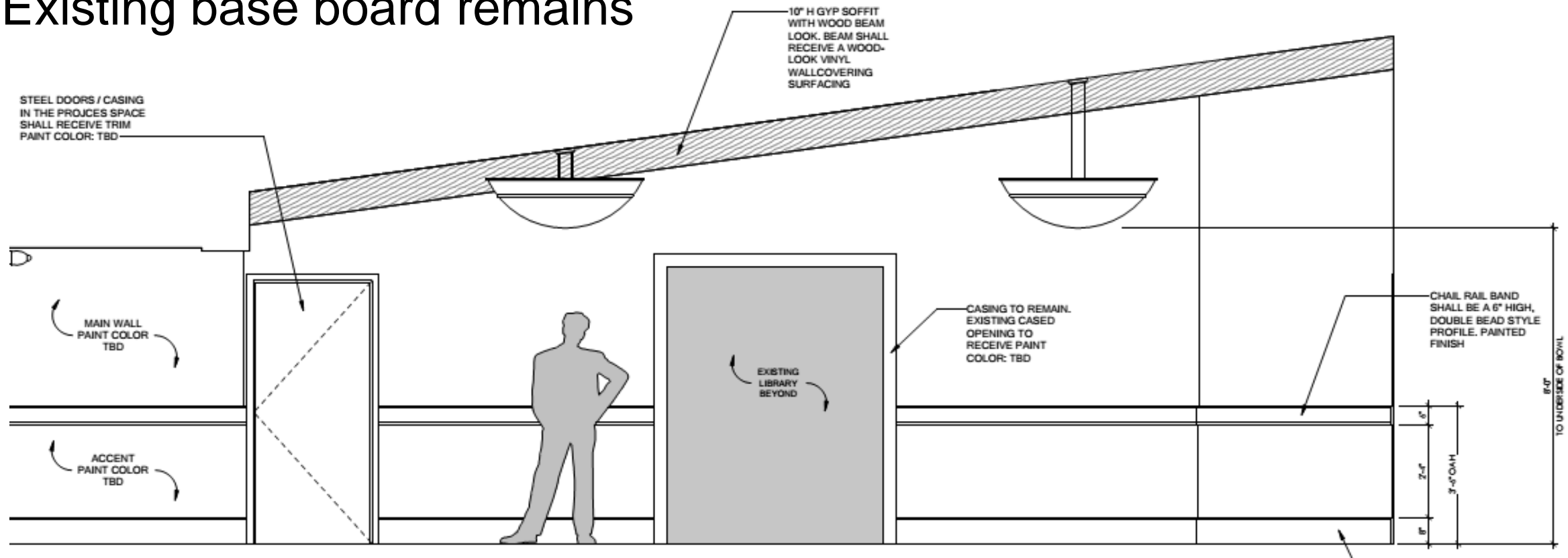
- (8) Large 4' round accent lights
- Recessed 6" LED lights





# Walls:

- Add Chair Rail
- 2 wall paint colors
- Existing base board remains



# Furniture:

- New commercial grade furnishings to include chairs, couches, benches, tables and stand-up tables



Example image only

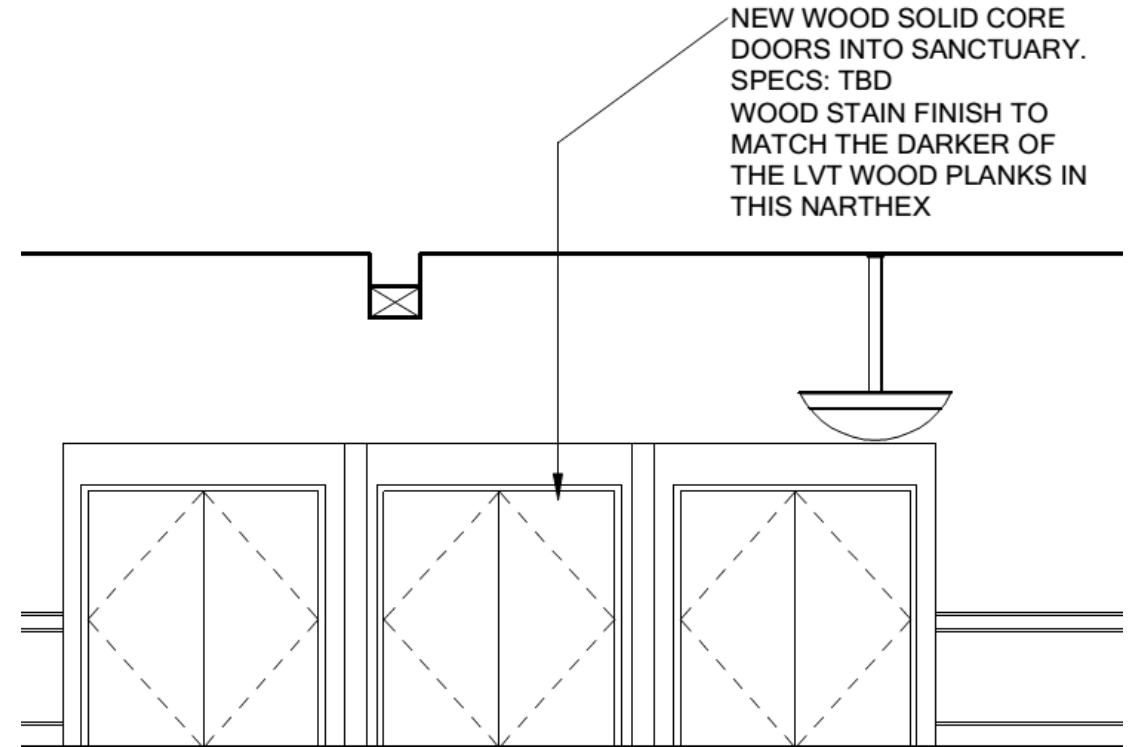
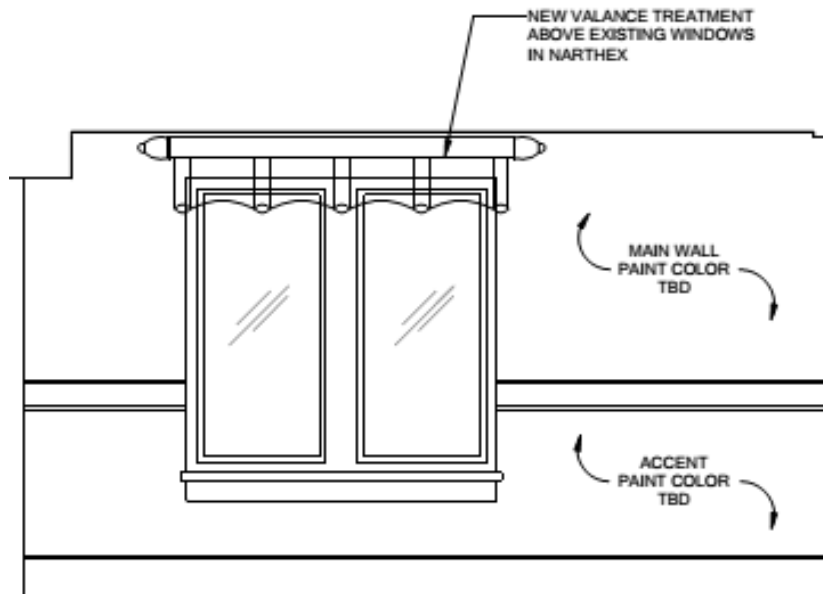
# Signage:

- New, clear signage to help guests easily navigate the building



# Finishing Touches:

- New sanctuary doors with sound rating or new hardware and sound proofing of current doors
- New window treatments



# Breaking down the numbers

- **Estimated Total Cost - \$250,000**
- 6000 sq/ft area, furnished at \$42 per sq/ft
- Our goal would be met if 300 families adopted 20sq/ft
- At \$70 per month per family, it could be possible to raise the money in a year

# Next Steps

1. We ask that you prayerfully consider making a commitment to contribute to this project. It is our goal to raise the funds by the end of 2018.
2. We will begin renovations when funding is completed, or in phases as funding is available.

# Approved Motion

- “We recommend the approval of the ‘Lobby Improvement Project’ to remodel the north lobby and east hallway areas with new flooring, ceiling, lighting, paint, sound abatement of sanctuary doors, furniture and signage with a coffee serving station in the north lobby. The work will occur as sufficient funding has been raised and may be split into phases as determined appropriate. The remodel will be funded from a donor designated capital improvement fund at a cost not to exceed \$250,000.”